



PHYSIKALISCHES KOLLOQUIUM

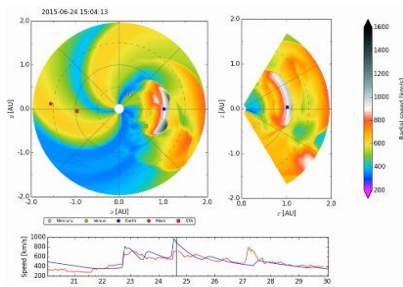
Sommersemester 2019

Montag, 20.05.2019, 12 Uhr c.t. HNB

The heliospheric evolution of coronal mass ejections and their impact on Earth

Prof. Dr. Stefaan Poedts

Universiteit Leuven, Belgien



Solar Coronal Mass Ejections (CMEs) are large-scale eruptive events in which large amounts of plasma (up to 10^{13} - 10^{16} g) and magnetic field are expelled into interplanetary space at very high velocities (typ. 450 km/s, but up to 3000 km/s).

When sampled in situ by a spacecraft in the interplanetary medium, they are termed Interplanetary CMEs (ICMEs). They are nowadays

considered to be the major drivers of "space weather" and the associated geomagnetic activity. The detectable space weather effects on Earth appear in a broad spectrum of time and length scales and have various harmful effects for human health and for our technologies on which we are ever more dependent. Severe conditions in space can hinder or damage satellite operations as well as communication and navigation systems and can even cause power grid outages leading to a variety of socio-economic losses. We will discuss different components of EUHFORIA (solar corona, heliospheric wind, different CME models) and its integration in the ESA Virtual Space Weather Modeling Centre and coupling to other models (effects, magnetosphere, etc.), and focus on the latest parameter studies of the effects of the cone CME model shape and the inclusion of an internal magnetic structure of the CMEs and the potential of these features to fit the in-situ wind parameter data at L1 and other locations, and to quantify the effects of the impact of the CMEs at Earth.

Einführung: Priv. Doz. Dr. H. Fichtner

Die Fakultät lädt alle Interessierten herzlich ein.